

CRP-RH14-10-W

INDUSTRIAL ROBOT WELDING APPLICATION

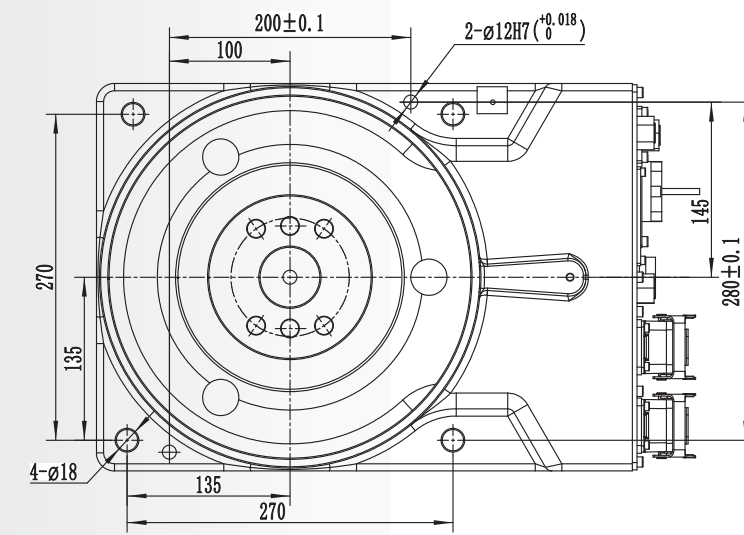


FUNCTIONAL FEATURES

- The arm span is 1.4 meters. The design is highly compact and can be flexibly installed on the ground or upside down.
- With large working space, fast running speed and high repeated positioning accuracy, it is suitable for wide range of welding applications.
- The safety emergency stop board independent of the control system is equipped with, and the safety relay circuit is adopted to provide double-circuit emergency stop to ensure the reliability of emergency stop.
- The robot body adopts highly flexible special cable.
- Built-in three-phase transformer makes 380V and 220V isolated to help the power supply more stable. Built-in three-phase filter can effectively improve the performance of EMC and EMI.
- The robot body is with dual-circuit gas pipe to meet the welding demand.
- The inner diameter of 6-axis middle hole is 44mm, it can meet the installation requirements of water-cooling torch and bellows torch.
- Highly flexible welding cable is built-in.

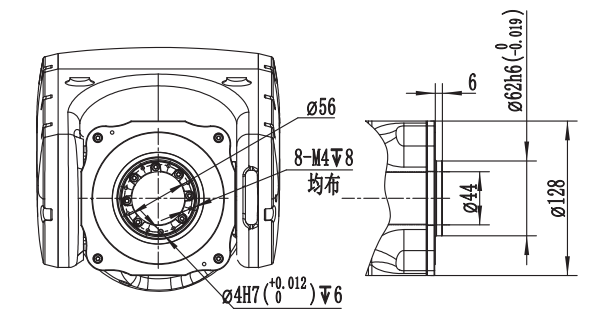
ROBOT BODY TECHNICAL PARAMETERS

Model	CRP-RH14-10-W	
Arm form	Vertical multiple joints	
Degree of freedom	6 axis	
Maximum payload	10KG	
Repeated positioning accuracy	±0.08mm	
Maximum reaching distance	1454mm	
Robot body weight	170KG	
Installation mode	Ground, upside down mounting, wall mounting	
Maximum travel	axis 1	Ground/upside down mounting -167°-167°, wall mounting -30°-30°
	axis 2	-155°-90°
	axis 3	-175°-240°
	axis 4	-190°-190°
	axis 5	-105°-130°
	axis 6	-210°-210°
Maximum speed	axis 1	169°/S
	axis 2	169°/S
	axis 3	169°/S
	axis 4	301°/S
	axis 5	220°/S
	axis 6	743°/S
Allowable torque	axis 4	20N.m
	axis 5	20N.m
	axis 6	11N.m
Allowable moment of inertia	axis 4	0.5kg.m ²
	axis 5	0.5kg.m ²
	axis 6	0.16kg.m ²
Installation environment	ambient temperature	0-45°C
	relative humidity	20-80%(No condensation)
	vibration	Under 0.5 G
	Others	Robot installation must be away from: Flammable or corrosive liquids or gases, electrical sources of interference
IP level	Body IP54 , wrist IP67	
Advantage features	Compact structure, high speed, high precision, high expansibility and easy operation	
Application	Welding	
Electric Cabinet Configuration	C4	



Installation Dimension of Base

INSTALLATION INTERFACE DIAGRAM



Flange Dimensions

MOTION RANGE DIAGRAM

